



METAL CLAD PLUG & SOCKET



Directorate of Industries,
Uttar Pradesh
उद्योग निदेशालय उत्तरप्रदेश

★ CERTIFIED COMPANY ★



METAL CLAD PLUG & SOCKET

Technical Features of Metal Clad Plug & Socket

Site conditions :-

- * Ambient Temperature (Max $500 \pm 50C$)
- * Relative Humidity
- * Normal working at ambient : Proper Functioning

Technical Particulars

Ratings: 20A 2Pin 300V 50 Hz
 20A 3Pin 500V 50 Hz
 30A 3 Pin 500V 50 Hz

Enclosure material : Cast Aluminium Grade (LM-6)
Terminal Capacity : 1 to 4 Sqmm Flexible wire
Enclosures Degree : IP-65 at Male female fitment condition
of protection

Ref IS/IEC Standards : IS/IEC 309 Pt 1 & 3

Salient Features

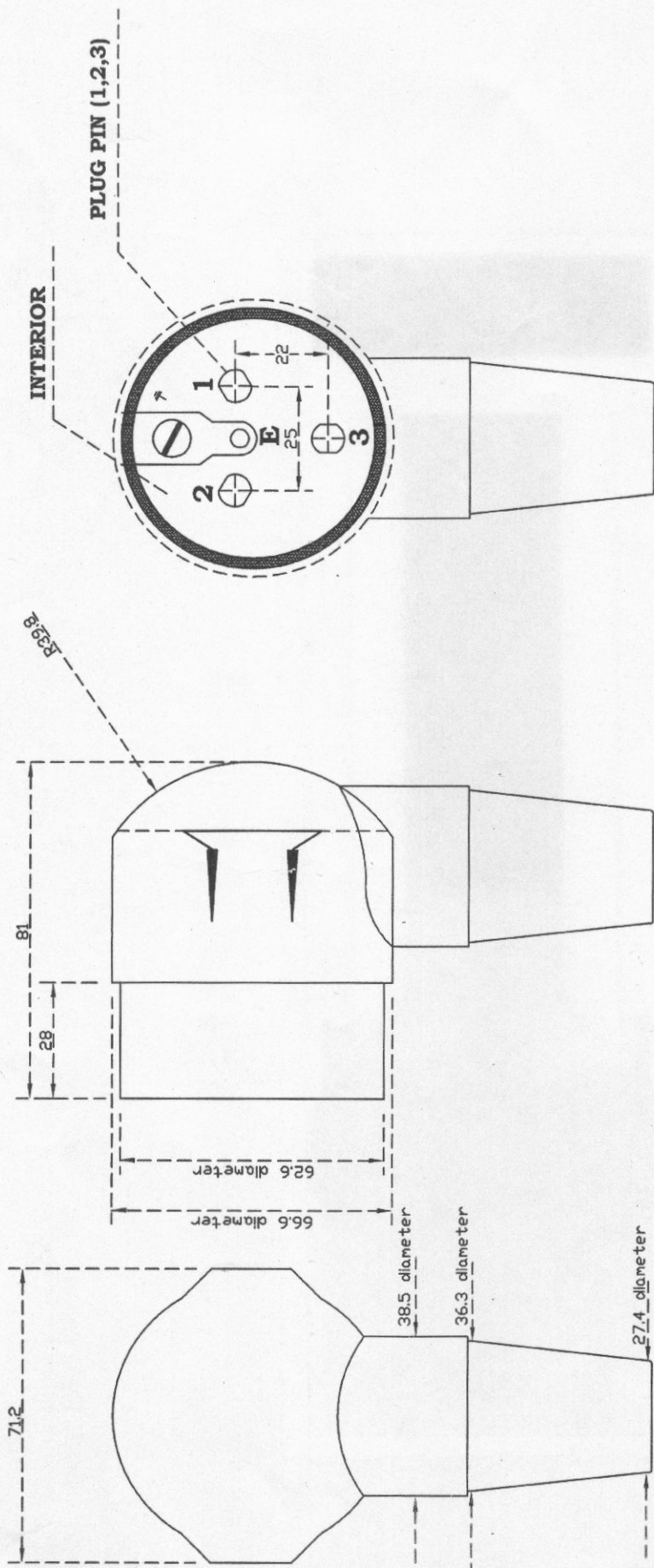
1. Perfect mechanical strength to withstand mechanical stress during fitting & operation
2. Perfect alignment assurance.
3. Fire retardant body module
4. Negligible millivolt Drop at full load condition
5. High Insulation level due to DMC Insulating material used for male female terminal fixing inside the module.

Routine test

1. HV test at 3KV for 1 minute
2. Mechanical & Electrical Endurance test
3. Load test
4. Megger test
5. Glow wire test i.e resistance to abnormal heat & fire.



SHRI TULSI SWITCHGEAR PVT. LTD.
D-176, Sector-10, Noida



TECHNICAL SPECIFICATION OF METAL CLAD PLUG & SOCKET

Application - Metal clad plug and socket are designed for heavy industrial equipments.
 Applications to provide better safety for installation

Range - 3 pin 10 A & 20 A 220 V AC/DC
 4 pin 20 A, 30 A & 63 A 440 V AC/250 V DC

Specification - Conforms To IEC 309 - 1 & 3.

NOTE - All dimensions are in mm.
 Permissible tolerance ± 0.1 mm

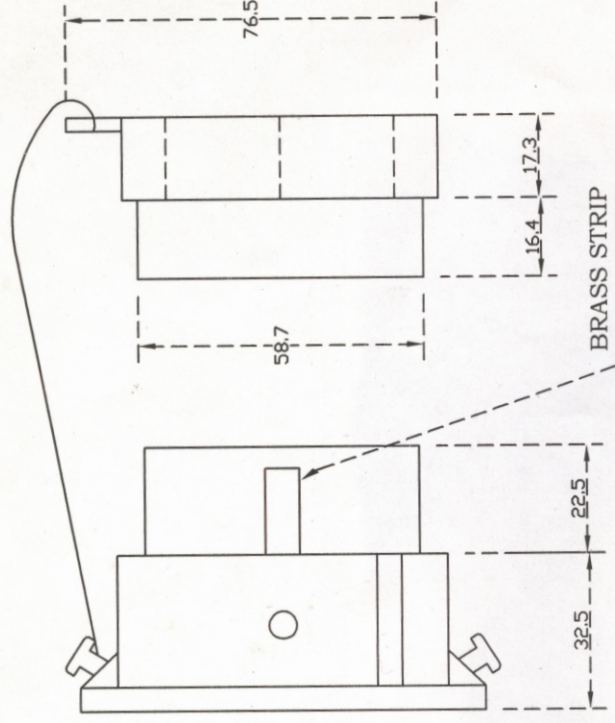
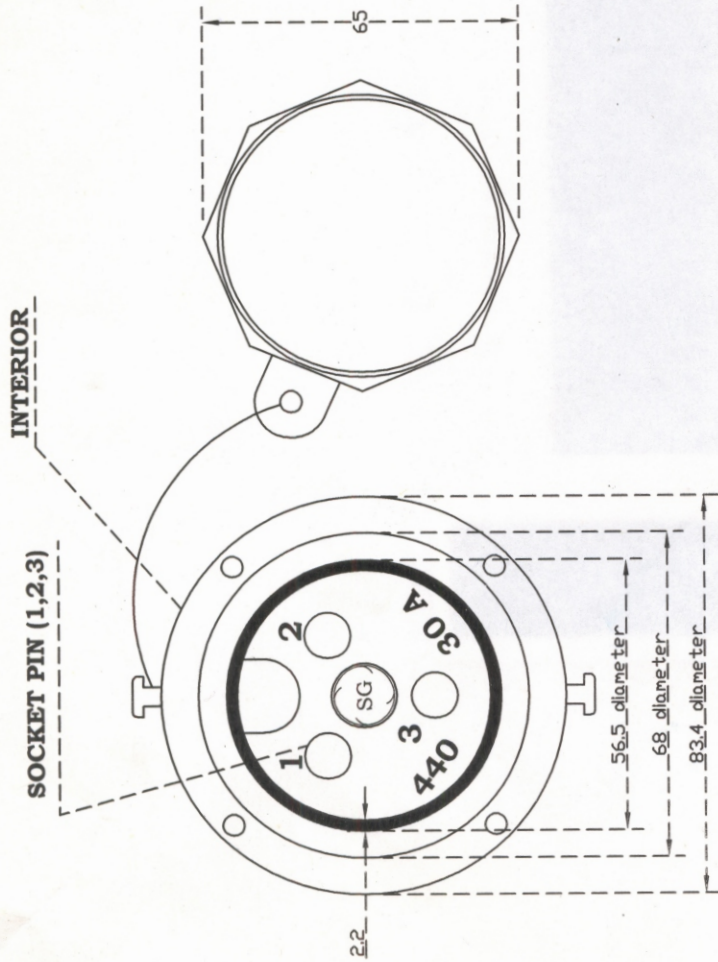
Body Material - Non corroding die cast aluminium Alloy (Grade : LM-6)

Interior - Dough Moulding Compound

Metal Part - Plug pin - Brass (Electrical grade)

1	DRN.	SIGN
2	CHD.	
DATE	APPO.	

TITLE : METAL CLAD PLUG 30 A	
SHRI TULSI SWITCHGEAR PVT. LTD. D-176, Sector-10, Noida	
SHEET NO.	REV. NO.



TECHNICAL SPECIFICATION OF METAL CLAD PLUG & SOCKET

Application - Metal clad plug and socket are designed for heavy duty industrial Applications to provide better safety for installation of equipments.

Range - 3 pin 10 A & 20 A 220 V AC/DC
4 pin 20 A , 30 A & 63 A 440 V AC/250 V DC

Specification - Conforms To IEC 309 - 1 & 3 .

Body Material -

Outer Casing - Non corroding die cast aluminium Alloy (Grade : LM-6)

Interior - Dough Moulding Compound

Metal Part - Socket pin - Copper (Electrical grade)

NOTE . All dimensions are in mm .
Permissible tolerance ± 0.1 mm

TITLE : METAL CLAD SOCKET 30 A		SHEET NO.
SHRI TULSI SWITCHGEAR PVT. LTD.		REV. NO.
D-176, Sector-10, Noida		
DATE	DRN.	SIGN
	CHD.	
	APPO.	